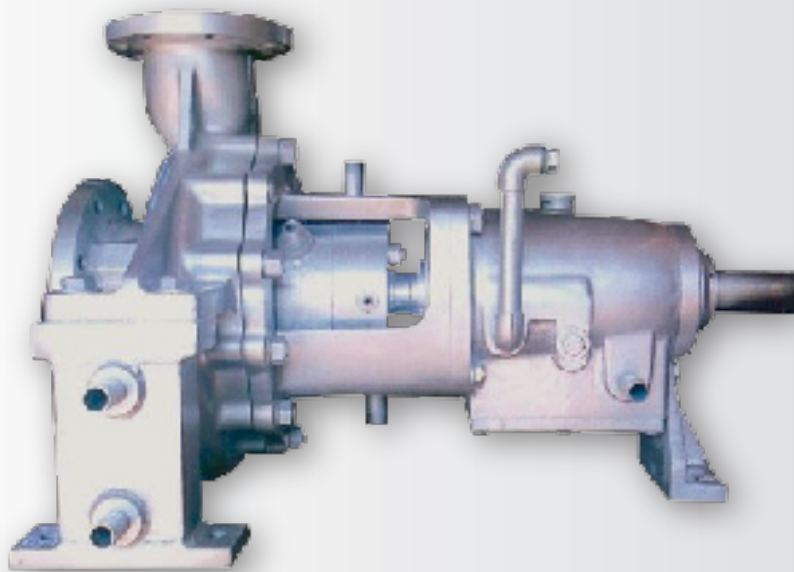


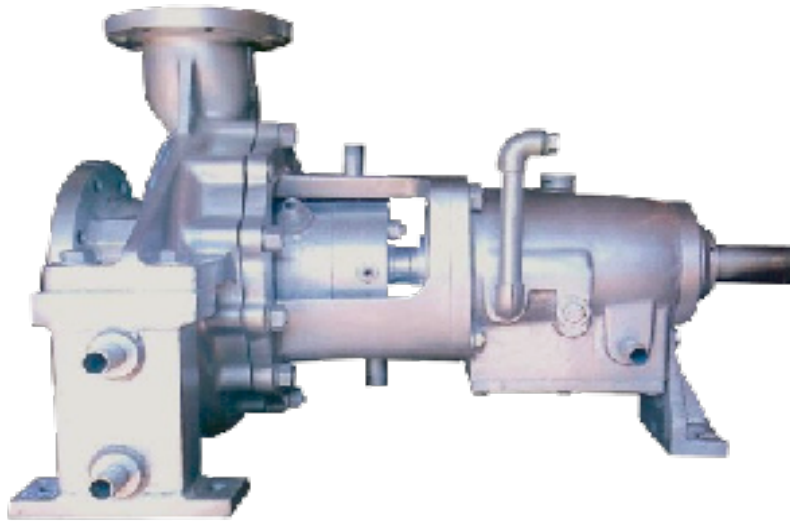
Hot Oil Centrifugal Pump





Hot Oil Centrifugal Pump

MPC's Hot Oil Centrifugal Pump is best for robust performance and reliability for demanding industrial applications. These pumps are engineered for high efficiency, longevity, and compliance with rigorous industry regulations, ensuring optimal functionality in various operating conditions. Ideal for petrochemical, chemical, and power generation industries, they guarantee superior fluid handling solutions



Material of Construction

Casing:	Cast Iron / Stainless Steel
Impeller:	Cast Iron / Stainless Steel
Shaft:	Cast Iron / Stainless Steel
Bearing Housing:	Cast Iron
Gland:	Packing / Mechanical seal

For Industries

Oil Industries

Main Applications

Hydro Carbon

Heat Transfer Liquid

Oil Services

High Temperature



Technical Data

1450 U/Min

S:NO	Model	Pump Size	Capacity upto M3/Hr	Head Meter
01	40 - 160	50 x 40	25	4 - 9
02	40 - 200	50 x 40	25	8 - 14
03	50 - 160	60 x 50	40	4 - 9
04	50 - 200	60 x 50	40	8 - 15
05	65 - 200	80 x 65	60	8 - 15
06	65 - 250	80 x 65	60	13 - 22
07	65 - 315	80 x 65	80	20 - 35
08	80 - 200	100 x 80	100	8 - 14
09	80 - 250	100 x 80	100	13 - 23
10	80 - 330	100 x 80	140	20 - 38